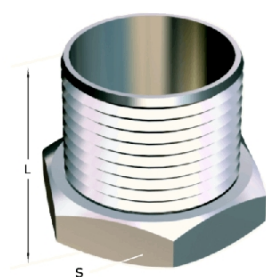


## Union (Fig. 287)

**Thread Type:** Components are threaded with a size compatible with ISO7/1.

**Finish:** Polished.

**Quality:** Manufactured in bar, tube or in a microfusion of AISI-316 stainless steel.



### Technical information

Nominal Pulgadas	D	L	S Exago	Peso kgs
1/4"	13.5	24	17	
3/8"	17.2	27	21	
1/2"	21.3	31	25	
3/4"	26.9	38	31	
1"	33.7	44	37.5	
1 1/4"	42.4	52	47	
1 1/2"	48.3	58	54	
2"	60.3	63	67	
2 1/2"	76.1	-	-	-
3"	88.9	-	-	-
4"	114.3	-	-	-