

## Tes reducidas sk

**Normas de fabricación:** Accesorios fabricados para soldar según ASTM-403WP-S (ANSI B 16.9)

**Calidades:** Calidades austeníticas tipos 304- L, 316-L

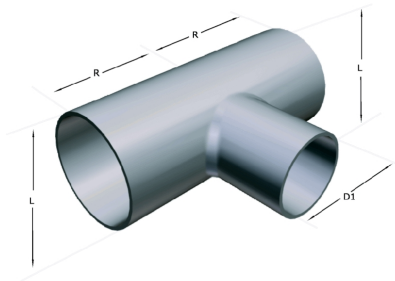
**Acabados:** Acabado estándar L/C

**Dimensiones:** Fabricados en diámetros de 1/4" a 24"

**Certificados:** Proporcionamos certificados del producto si se requieren, de acuerdo al estándar siguiente: EN 10204/3.1.B o DIN 50049.

**Tolerancias:** Diferencias admisibles en el diámetro y excentricidad +- 1,0 % y del espesor +- 12,55%

**Aplicaciones:** Los tubos ASTM son utilizados, en entornos industriales de temperaturas extremas y medios corrosivos. Igualmente usados en equipos de proceso: calentadores, intercambiadores de calor y reactores, así como en la conducción de fluidos ácidos de la industria petroquímica, petrolera y de procesamiento de alimentos.



### Información técnica

DN Pulgadas	dn Pulgadas	Dimensiones Schedule	Ø D	Ø D1	E	E1	R	T	Peso	Calidades AISI	
										304-L	316-L
3/4"	1/2"	10S	26.7	21.3	2.11	2.11	29	29	0.11	*	*
3/4"	1/2"	40S	26.7	21.3	2.87	2.77	29	29	0.15	*	*
1"	1/2"	10S	33.4	21.3	2.77	2.11	38	38	0.19	*	*
1"	1/2"	40S	33.4	21.3	3.38	2.77	38	38	0.22	*	*
1"	3/4"	10S	33.4	26.7	2.77	2.11	38	38	0.19	*	*
1"	3/4"	40S	33.4	26.7	3.38	2.87	38	38	0.23	*	*
1 1/4"	1"	10S	42.2	33.4	2.77	2.77	47.6	47.6	0.45	*	*
1 1/4"	1"	40S	42.2	33.4	3.68	3.38	47.6	47.6	0.53	*	*
1 1/2"	1/2"	10S	48.3	21.3	2.77	2.11	57	57	0.39	*	*
1 1/2"	1/2"	40S	48.3	21.3	3.68	2.77	57	57	0.52	*	*
1 1/2"	3/4"	10S	48.3	26.7	2.77	2.11	57	57	0.39	*	*
1 1/2"	3/4"	40S	48.3	26.7	3.68	2.87	57	57	0.52	*	*
1 1/2"	1"	10S	48.3	33.4	2.77	2.77	57	57	0.42	*	*
1 1/2"	1"	40S	48.3	33.4	3.68	3.38	57	57	0.55	*	*
2"	3/4"	10S	60.3	26.7	2.77	2.11	64	44	0.51	*	*

2"	3/4"	40S	60.3	26.7	3.91	2.87	64	44	0.71	*	*
2"	1"	10S	60.3	33.4	2.77	2.77	64	51	0.54	*	*
2"	1"	40S	60.3	33.4	3.91	3.38	64	51	0.74	*	*
2"	1 1/2"	10S	60.3	48.3	2.77	2.77	64	60	0.59	*	*
2"	1 1/2"	40S	60.3	48.3	3.91	3.68	64	60	0.83	*	*
2 1/2"	1 1/4"	10S	73	42.2	3.05	2.77	76	64	0.9	*	*
2 1/2"	1 1/2"	10S	73	48.3	3.05	2.77	76	67	0.9	*	*
2 1/2"	1 1/2"	40S	73	48.3	5.16	3.68	76	67	1.49	*	*
2 1/2"	2"	10S	73	60.3	3.05	2.77	76	70	0.94	*	*
2 1/2"	2"	40S	73	60.3	5.16	3.91	76	70	1.53	*	*
3"	1"	10S	88.9	33.4	3.05	2.77	86	70	1.1	*	*
3"	1"	40S	88.9	33.4	5.49	3.38	86	70	1.95	*	*
3"	1 1/2"	10S	88.9	48.3	3.05	2.77	86	73	1.19	*	*
3"	1 1/2"	40S	88.9	48.3	5.49	3.68	86	73	2.05	*	*
3"	2"	10S	88.9	60.3	3.05	2.77	86	76	1.23	*	*
3"	2"	40S	88.9	60.3	5.49	3.91	86	76	2.16	*	*
3"	2 1/2"	10S	88.9	73	3.05	3.05	86	83	1.31	*	*
3"	2 1/2"	40S	88.9	73	5.49	5.16	86	83	2.29	*	*
4"	2"	10S	114.3	60.3	3.05	3.05	105	89	2.35	*	*
4"	2"	40S	114.3	60.3	6.02	3.91	105	89	4.5	*	*
4"	2 1/2"	10S	114.3	73	3.05	3.05	105	95	2.45	*	*
4"	2 1/2"	40S	114.3	73	6.02	5.16	105	95	4.7	*	*
4"	3"	10S	114.3	88.9	3.05	3.05	105	98	2.5	*	*
4"	3"	40S	114.3	88.9	6.02	5.49	105	98	4.8	*	*
5"	3"	10S	141.3	88.9	3.4	3.05	124	111	3.13	*	*
5"	3"	40S	141.3	88.9	6.55	5.49	124	111	5.85	*	*
5"	4"	10S	141.3	114.3	3.4	3.05	124	117	3.26	*	*
5"	4"	40S	141.3	114.3	6.55	6.02	124	117	6.14	*	*
6"	2 1/2"	10S	168.3	73	3.4	3.05	143	121	4.85	*	*
6"	3"	10S	168.3	88.9	3.4	3.05	143	124	4.9	*	*
6"	3"	40S	168.3	88.9	7.11	5.49	143	124	9.8	*	*
6"	4"	10S	168.3	114.3	3.4	3.05	143	130	5.1	*	*
6"	4"	40S	168.3	114.3	7.11	6.02	143	130	10	*	*
6"	5"	10S	168.3	141.3	3.4	3.4	143	137	5.3	*	*
6"	5"	40S	168.3	141.3	7.11	6.55	143	137	10.4	*	*
8"	4"	10S	219.1	114.3	3.76	3.05	178	156	8	*	*
8"	4"	40S	219.1	114.3	8.18	6.02	178	156	17.5	*	*
8"	6"	10S	219.1	168.3	3.76	3.4	178	168	8.4	*	*
8"	6"	40S	219.1	168.3	8.18	7.11	178	168	18.1	*	*
10"	4"	10S	273.1	114.3	4.19	3.05	216	184	13.5	*	*

10"	4"	40S	273.1	114.3	9.27	6.02	216	184	29.3	*	*
10"	6"	10S	273.1	168.3	4.19	3.4	216	194	14	*	*
10"	6"	40S	273.1	168.3	9.27	7.11	216	194	30	*	*
10"	8"	10S	273.1	219.1	4.19	3.76	216	203	14.5	*	*
10"	8"	40S	273.1	219.1	9.27	8.18	216	203	31	*	*
12"	6"	10S	323.9	168.3	4.57	3.4	254	219	23	*	*
12"	6"	40S	323.9	168.3	9.53	7.11	254	219	52	*	*
12"	8"	10S	323.9	219.1	4.57	3.76	254	229	24	*	*
12"	8"	40S	323.9	219.1	9.53	8.18	254	229	53	*	*
12"	10"	10S	323.9	273.1	4.57	3.76	254	241	25	*	*
12"	10"	40S	323.9	273.1	9.53	9.27	254	241	54	*	*