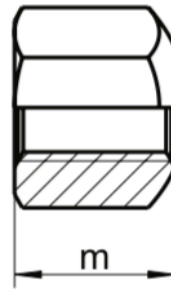
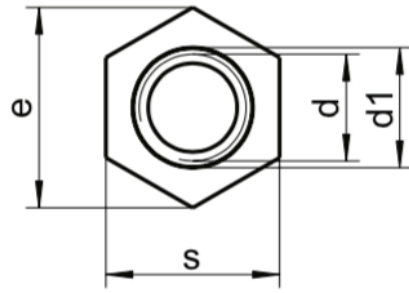


# DIN 6330

## Tuerca hexagonal

1,5xd altura



d	m	s	e	d1	⬠
M6	9	10	11,05	7,0	10
M8	12	13	14,38	9,0	13
M10	15	16	17,77	11,5	16
M12	18	18	20,03	14,0	18
M16	24	24	26,75	18,0	24
M20	30	30	33,53	22,0	30
M24	36	36	39,98	26,0	36
M30	45	46	51,28	32,0	46
M36	54	55	61,31	38,0	55
M42	63	65	72,61	44,0	65

Grado	UV
▲●	50
▲●	50
▲●	50
▲●	50
▲●	25
▲●	25
▲●	25
▲●	10
▲●	10
▲●	5

■ A1 / ▲ A2 / ● A4 | UV: Unidad de venta | Todas las medidas en mm | Otras dimensiones bajo pedido  
Ejemplo Art.-Nr.: 6330-2-8 DIN 6330 - A2 - M8